



ZUMALIGHTING
QUALITY OUTDOOR SOLUTIONS



MODEL
STEALTH

TYPE
LED


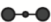





SERIES
ARCHITECTURAL

ZUMA LIGHTING LLC
325 N LARCHMONT BLVD STE 406, LOS ANGELES, CA 90004
INFO@ZUMALIGHTING.COM • (310) 975-3126 • ZUMALIGHTING.COM

ORDERING INFORMATION

Model STEALTH PM
Type LED
Series ARCHITECTURAL



FIXTURE	WATTAGE	VOLTS	COLOR TEMP	OPTICS	MOUNT	COLOR	OPTIONS
STH-PM =	23W = 3500lm to 3800lm 34W = 4750lm to 5250lm 50W = 6500lm to 7100lm 62W = 7650lm to 8300lm 100W = 13150lm to 14300lm 130W = 16500lm to 18000lm 165W = 20000lm to 22000lm 200W = 26000lm to 29000lm <i>Contact sales for additional options</i>	U = 120v- 277v 8 = 480v	27K = 2700K 3K = 3000K 35K = 3500K 4K = 4000K 5K = 5000K	T2 T3 T4 T5	I = post top A =  B =  C =  D =  E =  F =  G =  (wall mount)	DB = Dark Bronze BK = Black WH = White SL = Silver CC = Custom	M = Motion Sensor PC = Photocell D = Dimming S = Surge Protection LS = 180° Cutoff Shield

SPECIFICATIONS

Housing

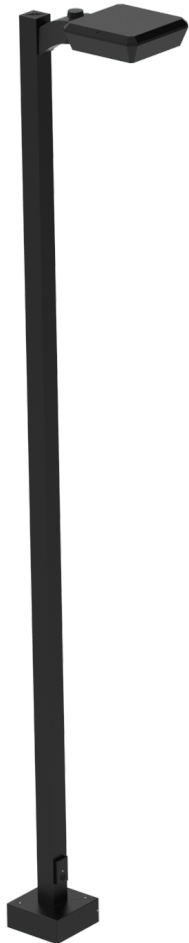
The fixture housing is constructed from a combination of fabricated, cast, and spun aluminum.

Electrical Components

High performance LEDs utilize state-of-the-art technologies for improved thermal performance. Available in Types II, III, IV, & V with wide choice of color temperatures ranging from CCT(2700K - 5000K). These LEDs are designed to fit LEDIL lenses with IP67 rating.

Finish

Thermoset polyester oven-baked powder coat, in any standard color. Custom colors are available to your specification. Marine grade finish available upon request.

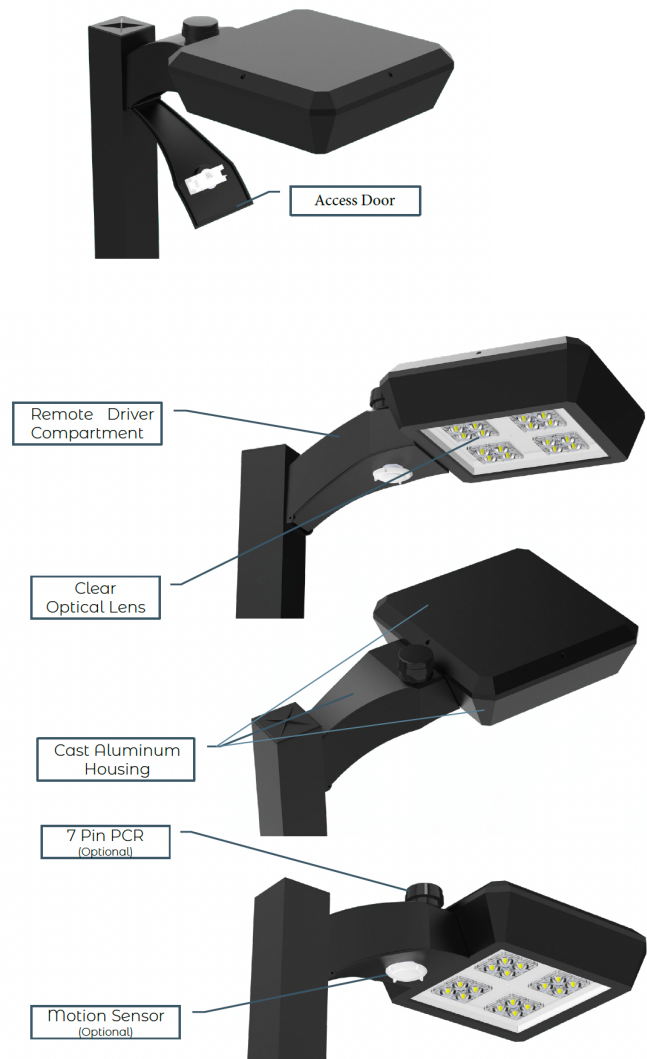


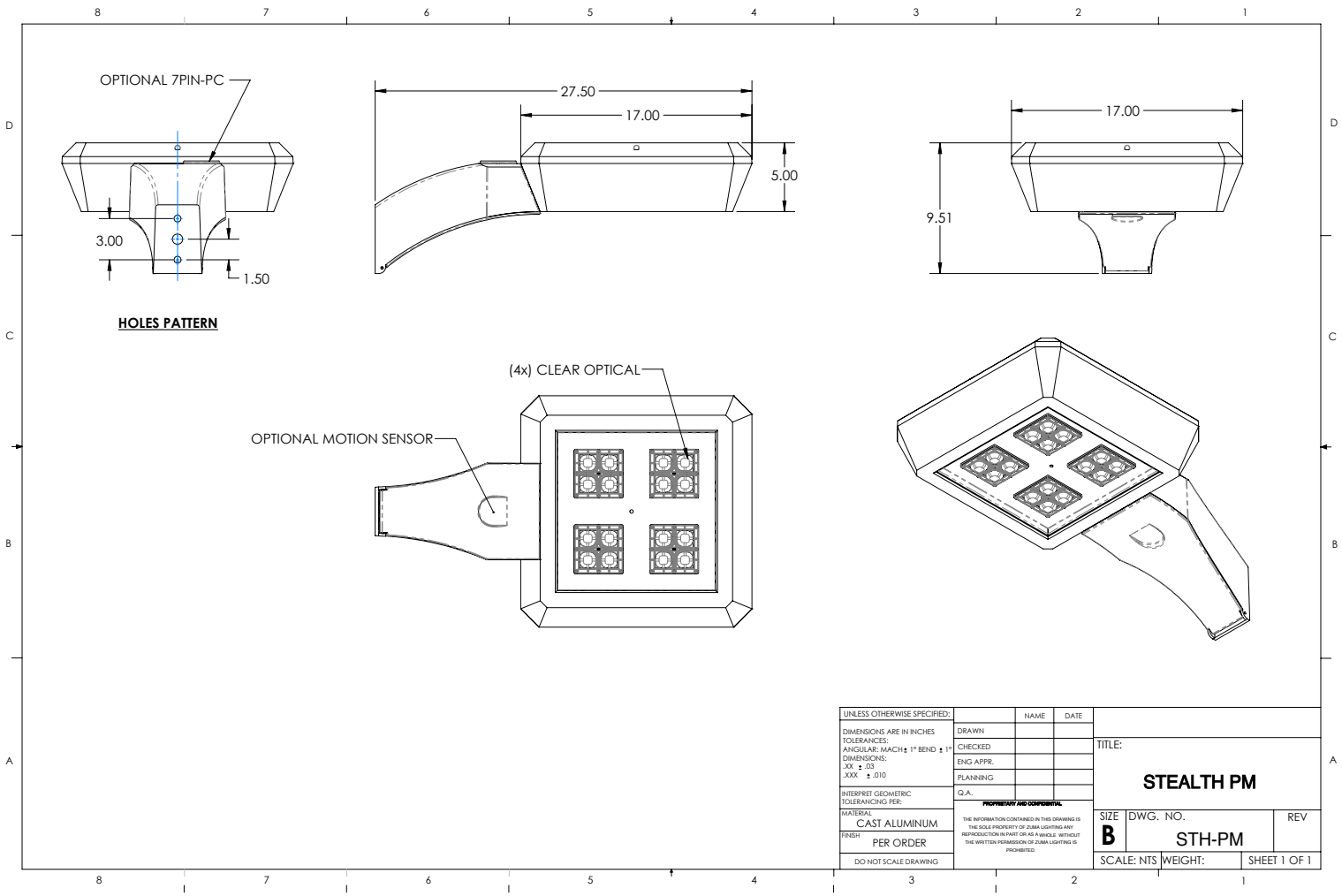
Certificates & Warranty

- ETL Listed
- Suitable for Wet Locations
- 5-Year Warranty

Mounting

Mounting arm provided for square or round poles, 4" minimum.





UNLESS OTHERWISE SPECIFIED:		NAME	DATE		
DIMENSIONS ARE IN INCHES		DRAWN		TITLE:	
TOLERANCES:		CHECKED		STEALTH PM	
ANGULAR: MACH ± 1° BEND ± 1°		ENG APPR:			
DIMENSIONS:		PLANNING		SIZE DWG. NO. REV	
.XX ± .03		Q.A.		B STH-PM	
.XXX ± .010				SCALE: NTS WEIGHT: SHEET 1 OF 1	
INTERPRET GEOMETRIC TOLERANCING PER:		<small>PROPRIETARY AND CONFIDENTIAL</small> <small>THE INFORMATION CONTAINED IN THIS DRAWING IS THE SOLE PROPERTY OF DANA LIGHTING AND REPRODUCTION IN PART OR AS A WHOLE, WITHOUT THE WRITTEN PERMISSION OF DANA LIGHTING IS PROHIBITED.</small>			
MATERIAL:					
CAST ALUMINUM					
FINISH:					
PER ORDER					
DO NOT SCALE DRAWING					